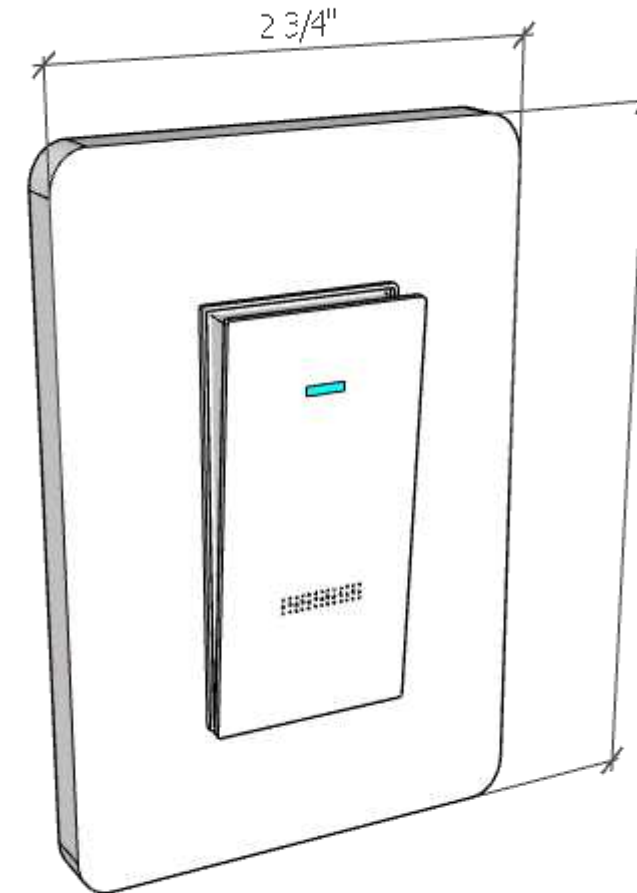
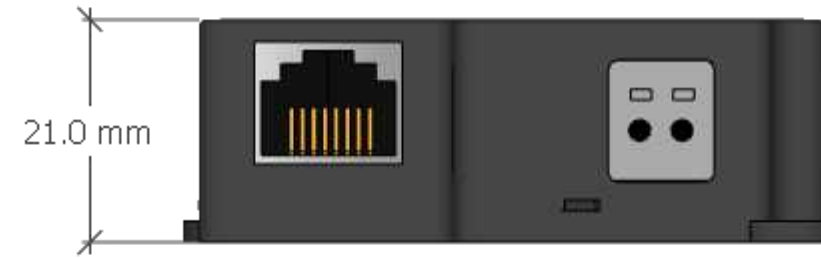




**AT-LED-24V**



**AT-WS-S1**



**AT-LED-24V  
PoE Lighting Kits**

11821 Buckner Road  
Austin TX 78726

DATE:  
February 19, 2026

TITLE:  
**AT-LED-24V**

DRAWING NUMBER:

**00**

**PoE+ Plug-and-Play LED Driver**

**INSTRUCTIONS:**

- Locate where the Power Sourcing Equipment (PSE) will be located within 330 ft (100m) of the lighting controller location
- Locate and install the AT-LED-24V within 100 ft of the final location of the light switch AT-WS-S1. AT-LED-24V is designed to fit into typical 4" ceiling boxes.
- Run wiring and install light fixtures and controller

INPUTS		OUTPUTS	
POWER	IEEE 802.3at (PoE+)	POWER	24 VOLT CONSTANT VOLTAGE
CONTROL	WIRELESS LIGHT SWITCH		22 watts
<i>Required Accessory</i>	<i>AT-WS-S1</i>	TERMINATIONS	PUSH-IN 22-18 AWG

# AT-LED-24V-RGBDisc

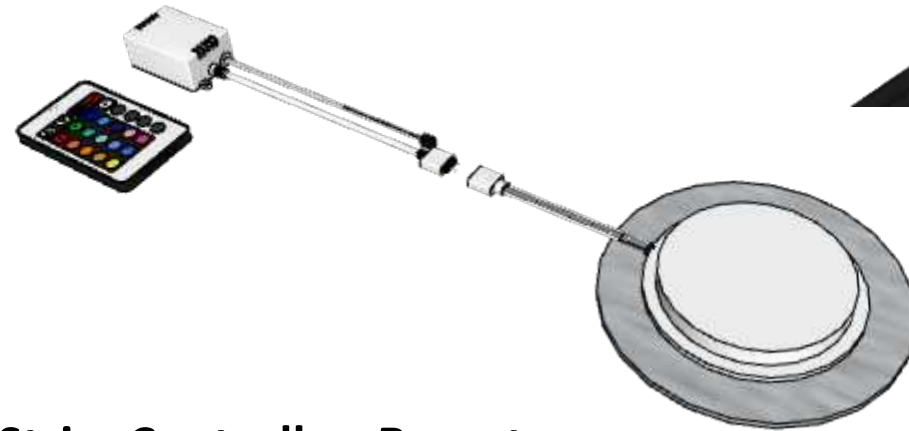
*Kit for RGB Disc Light*

PACKING LIST		
QTY	SKU OR ID	DETAILS
1	AT-LED-24V	24 VOLT CONSTANT VOLTAGE DRIVER
1	AT-WS-S1	WIRELESS, BATTERY FREE SWITCH
1	RGB Disc	4" RGB Disc Light
1	RGB Controller	RGB Bluetooth Enabled Controller
1	RGB Remote	RGB Bluetooth Enabled Remote



AT-WS-S1

AT-LED-24V



RGB Strip, Controller, Remote

**AT-LED-24V  
PoE Lighting Kits**

11821 Buckner Road  
Austin TX 78726

DATE:  
February 19, 2026

TITLE:  
AT-LED-24V-  
RGBDisc BoM

DRAWING NUMBER:

**01**

# General Layout

**INSTRUCTIONS:**

- Locate where the Power Sourcing Equipment (PSE) will be located within 330 ft (100m) of the lighting controller location
- Locate and install the AT-LED-24V within 100 ft of the final location of the light switch AT-WS-S1. AT-LED-24V is designed to fit into typical 4" ceiling boxes.
- Run wiring and install light fixtures and controller
- Download app, follow instructions for pairing device

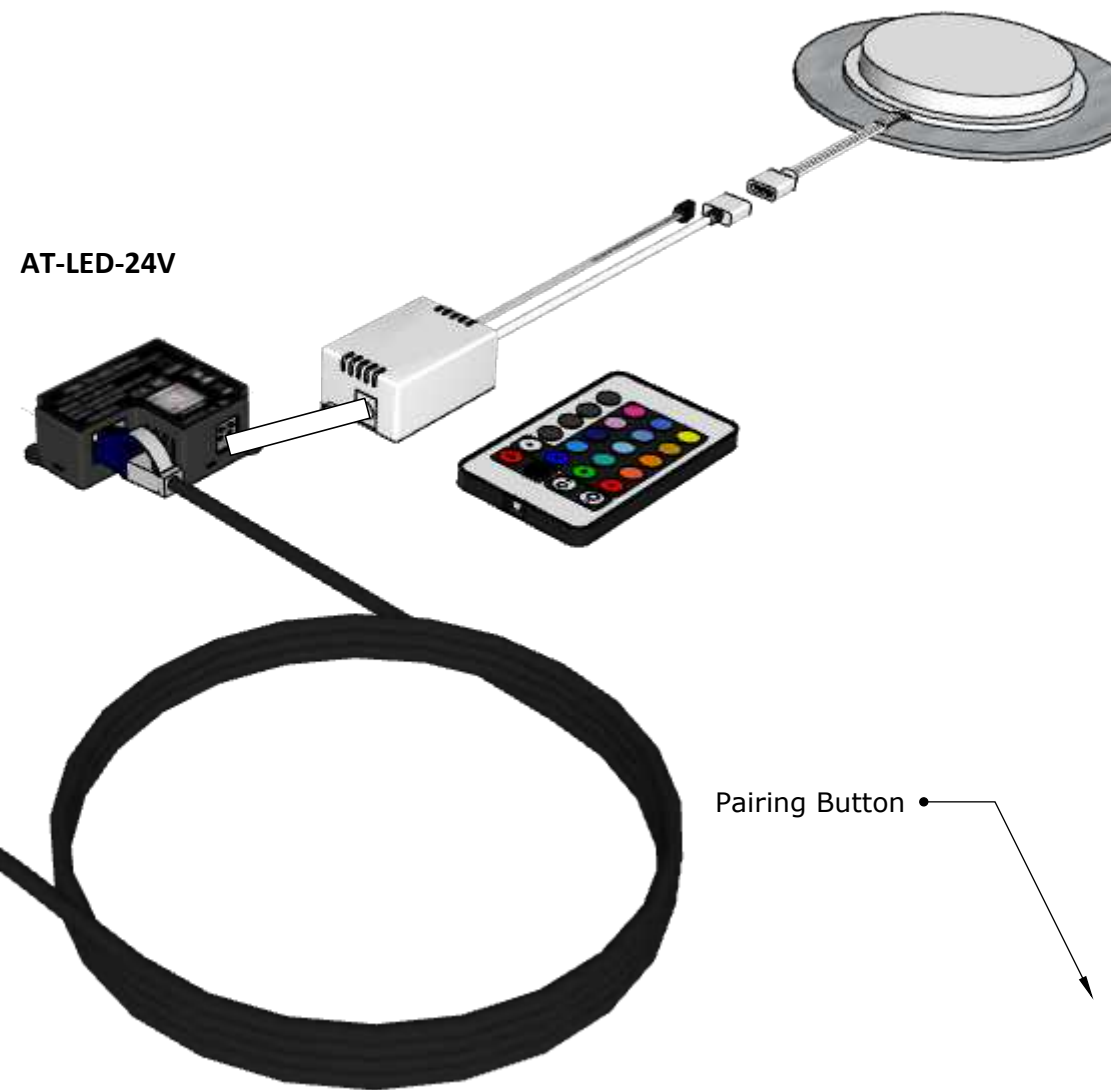


iOS App



Google Play App

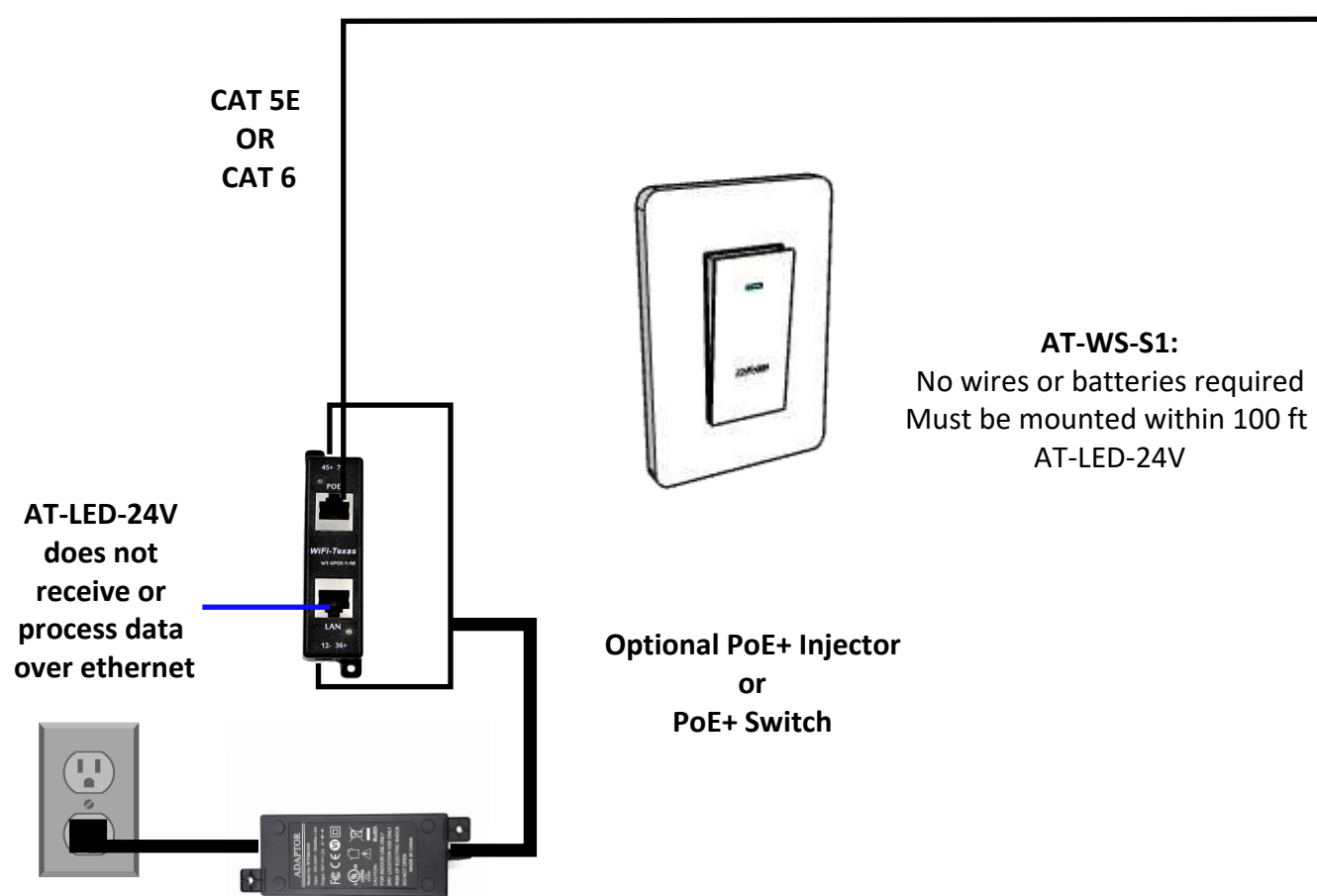
AT-LED-24V



Pairing Button

**AT-LED-24V  
PoE Lighting Kits**

11821 Buckner Road  
Austin TX 78726



**Power Sourcing Equipment:** The AT-LED-24V kits are rated for 25 watts which requires IEEE 802.3at compliant or compatible PoE switches or Injectors. Please contact PoE Texas for recommended compatible devices.

**IMPORTANT PAIRING:** Make sure to pair your light switch to the AT-LED-24V after it is powered on but before you install in an enclosure or somewhere inaccessible.

Press the AT-LED-24V button for 4-5 seconds until the green led is off, it will go into pairing mode, then press the light switch. When the green led flashes 2 times, it means the pairing has been successful. Each AT-LED-24V can pair with up to 42 switches.

**UNPAIRING:**

Press the AT-LED-24V for 10 seconds, the green LED will turn off, then flash 4 times. It means the AT-LED-24V is in factory setting mode. All pairings have been removed.

You may consider doing a preliminary wiring before installing the fixtures to sync the light switch.

DATE:  
February 19, 2026

TITLE:  
**AT-LED-24V-  
RGBDisc  
Layout**

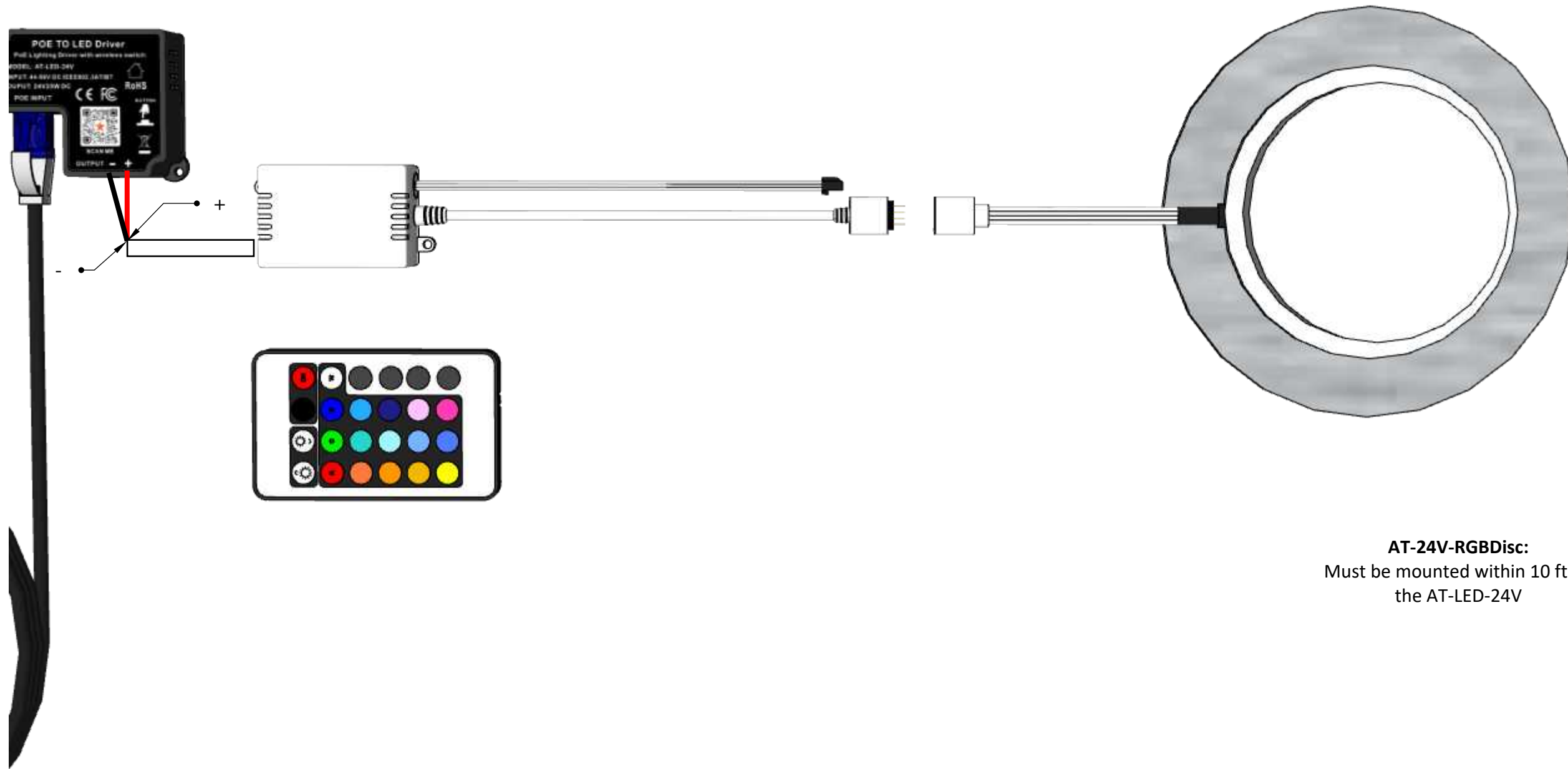
DRAWING NUMBER:

# AT-LED-24V-RGBDisc



## AT-LED-24V PoE Lighting Kits

11821 Buckner Road  
Austin TX 78726



DATE:  
February 19, 2026

TITLE:  
AT-LED-24V-  
RGBDisc Wiring

DRAWING NUMBER:

03